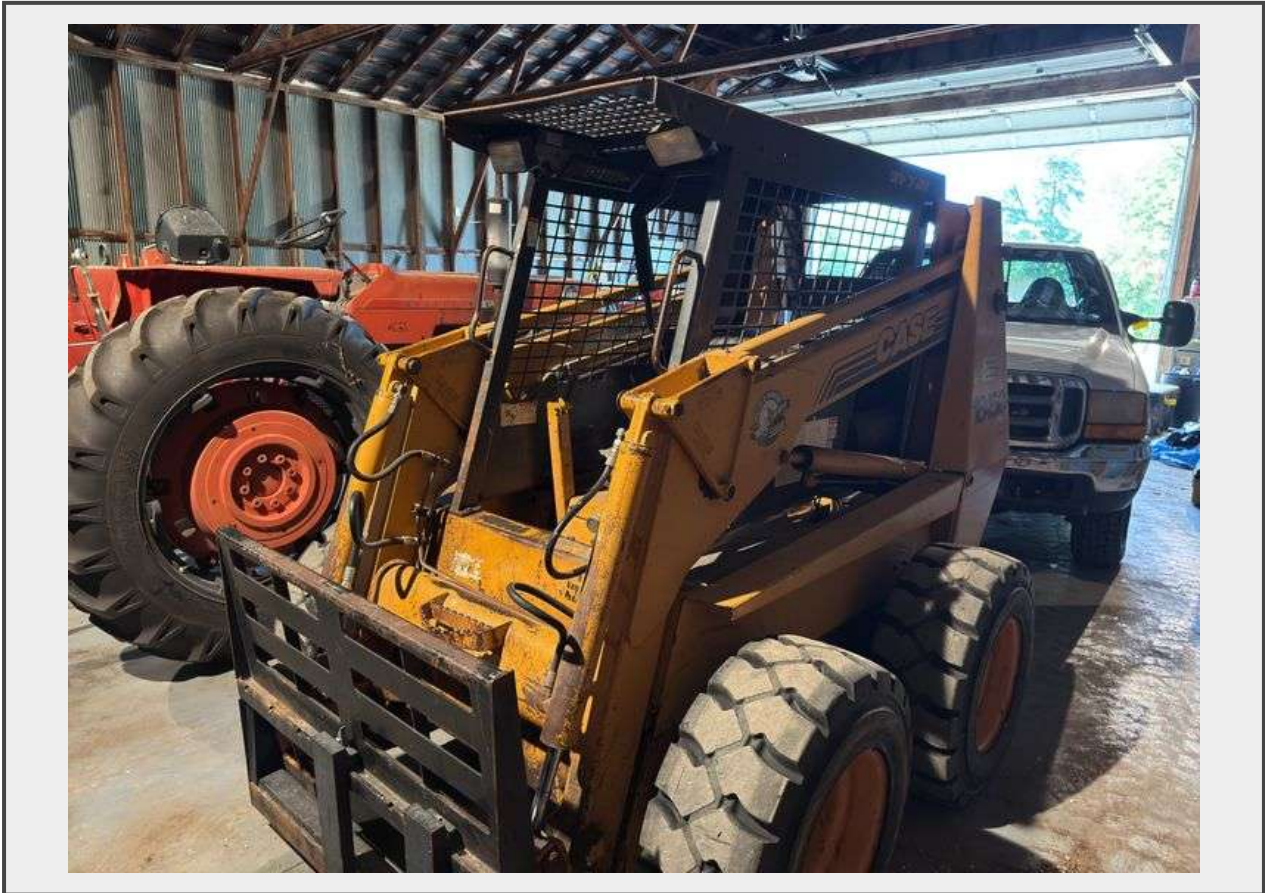


Sale Name: Keebler Estate-Inland, Nebraska

LOT 10 - Case 1845C skid loader



Description

Case 1845C skid loader, 3535 unverified hours. Includes bucket, forks, and bale spear attachments. Seat is in rough condition. Runs and operates smoothly. Does have a leaky hydraulic cylinder.

The Case 1845C Skid Steer Loader features a 57 hp diesel engine, an operational weight of approximately 6,186 lbs, and a maximum lift capacity of 1,751 lbs.

Machine was originally owned by the Adams County Fairgrounds.

Usage has primarily been to feed large round bales for livestock.

BUYER PREMIUM CAPPED AT \$500

Quantity: 1



<https://www.ruhterauction.land/>